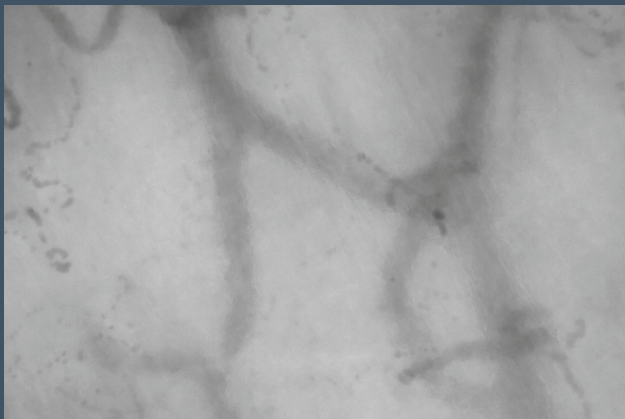


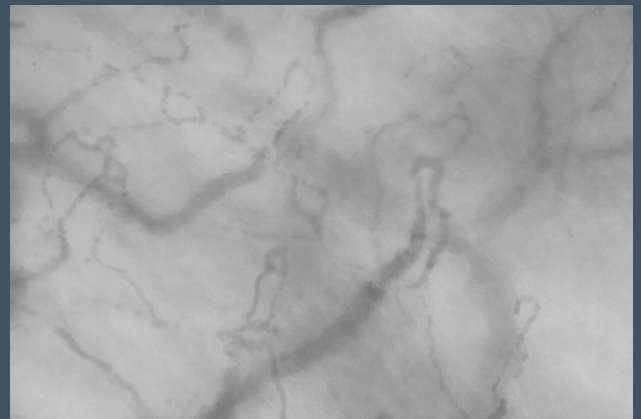
Monitor the status of the endothelial glycocalyx lining inside the microvessels with GlycoCheck. *Available for patient testing in your office*

Unhealthy microcirculation
BEFORE
taking Endocalyx Pro™



Week 0
Low score = 2.13*

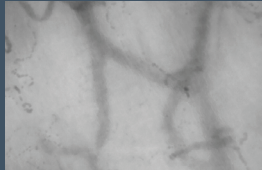
Healthy microcirculation
AFTER
taking Endocalyx Pro™



Week 12
High score = 3.74*

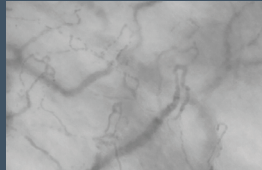
MicroVascular Health Score™ Dashboard

Unhealthy microcirculation BEFORE taking Endocalyx Pro™



**Week 0
Low score = 2.13***

Healthy microcirculation AFTER taking Endocalyx Pro™



**Week 12
High score = 3.74***



FDA Registered Class 1 Medical Device
that measures and analyzes the endothelial glycocalyx



GlycoCheck™ generates a single overall MicroVascular Health Score™

GlycoCheck is a non-invasive under-the-tongue test that produces a single MicroVascular Health Score™ that reveals the health of the microvessels lining the arteries, veins, and most importantly, the capillaries.

Lower scores are linked to

- ✔ Diabetes
- ✔ Hypertension
- ✔ Heart Disease
- ✔ Kidney Disease
- ✔ Stroke
- ✔ Dementia
- ✔ Septic Shock
- ✔ Inflammatory Disorders
- ✔ Cancer Metastasis
- ✔ Long-Haul COVID-19 Complications

Non-invasive
under-the-
tongue test



GlycoCheck measures several key parameters of the microvascular system

Values are displayed in small dials below the main chart

Capillary Density D4-D6

The number of capillary blood vessels with a diameter of 4 to 6 microns. This number tells you the capacity of your capillary network to get nutrients to organs and tissue cells. A higher number is better. Average normal ranges are in the yellow area.

CBV (Capillary Blood Volume) Recruitment Capacity

Reserve capacity that shows the additional number of functional capillary blood vessels that can be engaged when blood flow goes up. This is important to know if capillary blood vessels can increase the supply of nutrients to tissues when organs need more nutrients and oxygen (for example, during exercise). Higher is better, but average normal ranges are in the yellow area.

Capillary Blood Volume Dynamic

The maximum capillary blood volume when all available capillary blood vessels are engaged at high blood flow levels. This tells the maximum functional capacity of the capillary network. Higher is better, but average normal ranges are in the yellow area.

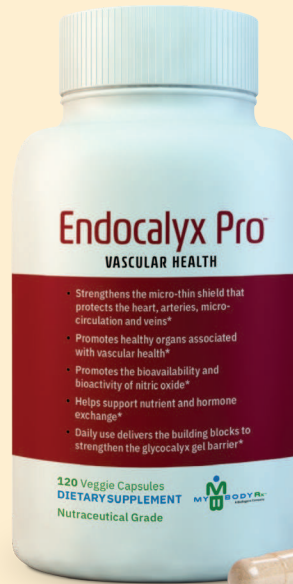
PBR (Perfused Boundary Region) Flow Corrected

The level of damage to the endothelial glycocalyx. A lower number means a healthier glycocalyx. The functional implication: you need a healthy glycocalyx to protect the capillaries and keep the recruitment capacity high. A lower number is better and implies a thicker systemic glycocalyx.

MicroVascular Health Score (MVHS)

An overall score based on capillary density, recruitment capacity, and glycocalyx health to report the health of the microvascular system. A higher MVHS score means better microvascular health, enabling delivery of nutrients and oxygen to, and removal of waste and carbon dioxide from, organs and tissues. Scores of most healthy people range between 3.0 and 7.0.

For patients who want to improve their MicroVascular Health Score, there is the Endocalyx Pro™ solution.



Strengthens the micro-thin shield that protects the heart, arteries, microcirculation and veins*



Restore, regenerate, and protect the endothelial glycocalyx with Endocalyx Pro™

Endocalyx Pro™ is a proprietary, patented dietary supplement that has been clinically shown to maintain a healthy glycocalyx*

This patented anti-aging supplement formula has been clinically shown to improve the health of the glycocalyx using seven synergistic ingredients from three classes of compounds:

- **Restore: Polysaccharides enable repair of damage to the glycocalyx.** Polysaccharides are long sugar chains that can interact with proteins and other molecules of the glycocalyx to restore its protective structure.
- **Regenerate: Amino sugars enable the production of more glycocalyx.** Amino sugars are the precursor for polysaccharide biosynthesis. They enable the cells of the vessel wall to produce more glycocalyx polysaccharides and regenerate the body's ability to produce more of the protective gel.
- **Protect: Antioxidants protect the polysaccharides** of the endothelial glycocalyx from additional damage and breakdown.

*These statements have not been evaluated by the Food and Drug Administration. These products are not intended to diagnose, treat, cure, or prevent any disease.

GlycoCheck™ System Specifications

Software Version	GlycoCheck software 5.3
Computer System	PC Laptops SMT7 Series 15" RTX 3060
Processor	i7 12700H
Memory	DDR4 LAPTOP 32GB 3200MHz RAM
SSD	4TB SN850X NVMe
External SSD	4TB Crucial External SSD
HDD	PCL PREMIUM 2TB SN850X
Operating System	Windows 11 Pro
Mouse	Logitech M325 Wireless Mouse / Integrated touchpad
Warranty	3-Year Warranty
Case Color	Charcoal
High-Definition Auto-Focus Video Microscope Camera	CapiVision™
User's Manual and Demonstration Video	Included
Tech Support	Included
Online Training and Certified Technician Training	Included
Practitioner CME Training on Glycocalyx and Microvascular Science	Included for physicians and staff at No Cost. Required Certification Course can be accessed at: https://www.bostonbiolifeacademy.com/courses/glycocheck-training-p1
5-Year Warranty	Included
Warranty and Service Policy	https://glycocheckpro.com/warranty-service-policy/
Click-Wrap License Agreement for Healthcare Practitioners	https://glycocheckpro.com/medical-office-click-wrap-license/
Click-Wrap License Agreement for Researchers	https://glycocheckpro.com/academic-click-wrap-license/
Test Reports	60 included; additional tests are \$75.00 each
Single-Use Sterile Disposable Lens Covers	60 included; additional lens covers are \$6.00 each

- Endothelial glycocalyx research using GlycoCheck is being conducted in Africa, Asia, Australia, China, Europe, Japan, Russia, and the United States
- GlycoCheck is used in over 150 academic research hospitals worldwide
- Over 100 peer-reviewed published papers have used GlycoCheck



For more information about **Endocalyx Pro™** visit **Microvascular.com** or scan this QR Code on your smartphone:



For more information about **GlycoCheck** visit **GlycoCheckPro.com**.